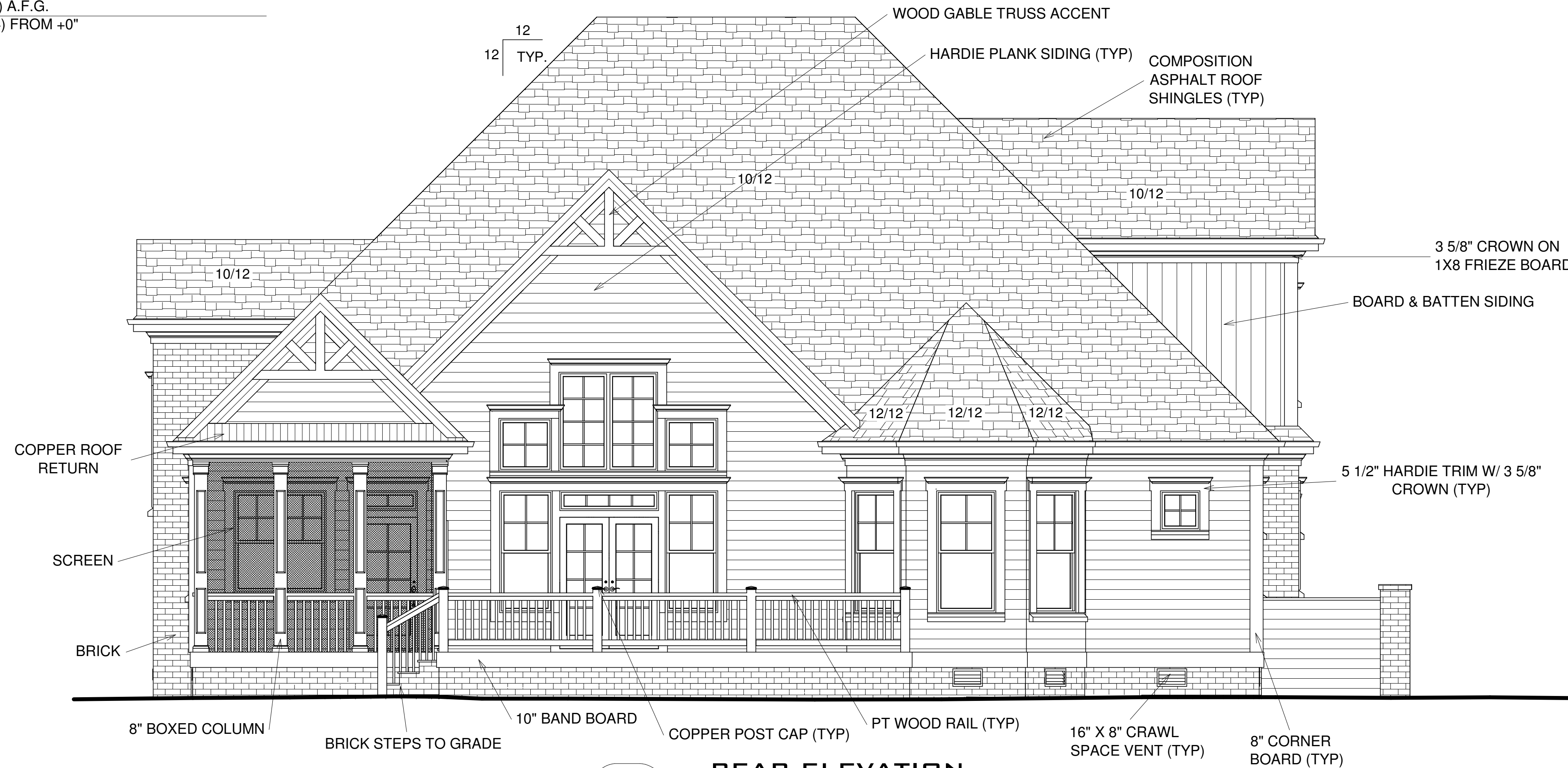


RIDGE +413 1/4" (34'-5 1/4") A.F.G.  
+383 1/4" (31'-11 1/4) FROM +0"

UPPER FLOOR CEILING +243 5/8"

UPPER FLOOR +134 1/8"  
MAIN FLOOR CEILING +121 1/2"  
FROG FLOOR +115 5/8"  
GARAGE CEILING +103"

ELEV = +47'-6" MAIN FLOOR +0"  
GRADE @ GARAGE DOORS -30"



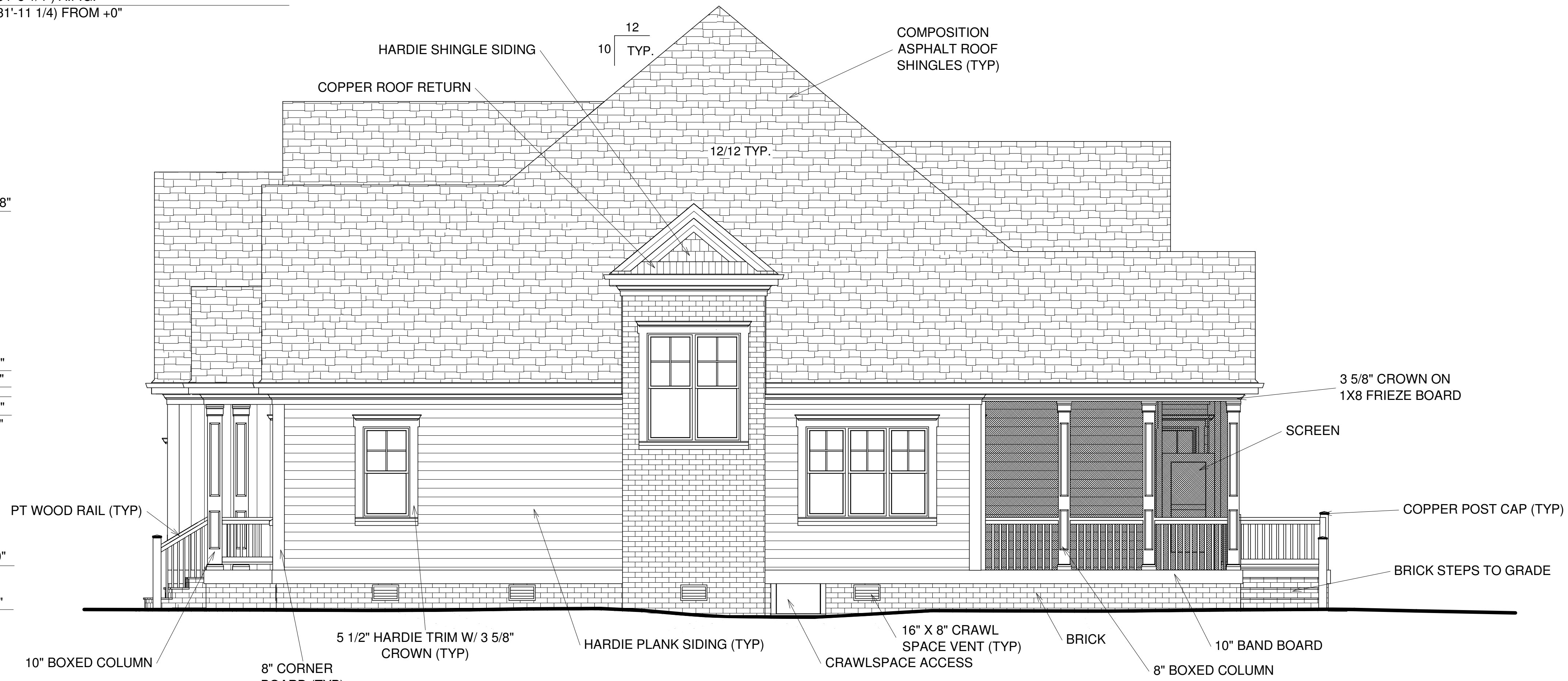
**A** REAR ELEVATION  
SCALE: 1/4" = 1'-0" SOUTHWEST

RIDGE +413 1/4" (34'-5 1/4") A.F.G.  
+383 1/4" (31'-11 1/4) FROM +0"

UPPER FLOOR CEILING +243 5/8"

UPPER FLOOR +134 1/8"  
MAIN FLOOR CEILING +121 1/2"  
FROG FLOOR +115 5/8"  
GARAGE CEILING +103"

ELEV = +47'-6" MAIN FLOOR +0"  
GRADE @ GARAGE DOORS -30"



**B** RIGHT ELEVATION  
SCALE: 1/4" = 1'-0" NORTHWEST